

For over half a century, Tetra Rex® has been synonymous with milk and dairy – and it remains the King for a whole range of chilled products.

The iconic pioneer

Six decades on from its introduction, Tetra Rex® continues to lead the way in modern, convenient chilled packaging – from being the world’s first fully renewable package to best-in-class printing technology. And this iconic design is now available in countless sizes, formats, and openings suitable for an endless variety of products.



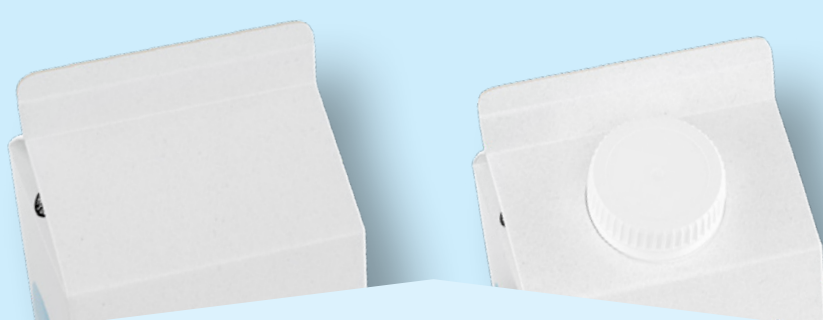
A size for every occasion

This broad and flexible portfolio is available in **four formats** and **14 different volumes**, giving you the flexibility to fill a wide range of chilled products to suit multiple consumption occasions.



Cap it off

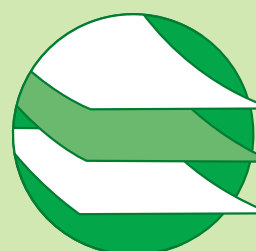
Tetra Rex is available with a range of openings, from Easy Opening to our TwistCap™ one-step screw caps and our tethered TwistCap Pro. All are available in plant-based material, and a full range of standard colours.



Setting sustainability standards

Tetra Rex® was the world’s first fully renewable package when launched, and it continues to set sustainability standards. Get a 35% CO₂ reduction compared to standard, fossil-based

Tetra Rex®¹ thanks to packaging material and cap made of polymers derived from sugarcane, plus eligibility to carry the Bonsucro and FSC™ on-pack labels.



Internal layer made from polymers derived from sugarcane
Paperboard
External layer made from polymers derived from sugarcane

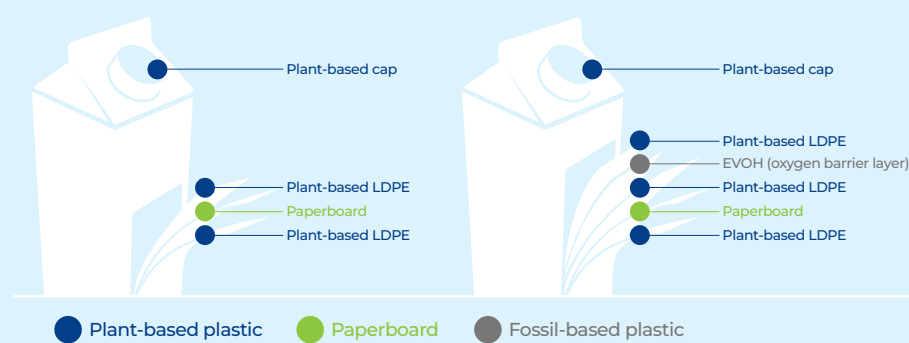
1. Source: based on publicly available LCA from Braskem, November 2013.

Protecting what’s good

Two barrier options protect your product – milk spec BIO for non-oxygen-sensitive products, and plastic barrier spec BIO for oxygen-sensitive products.

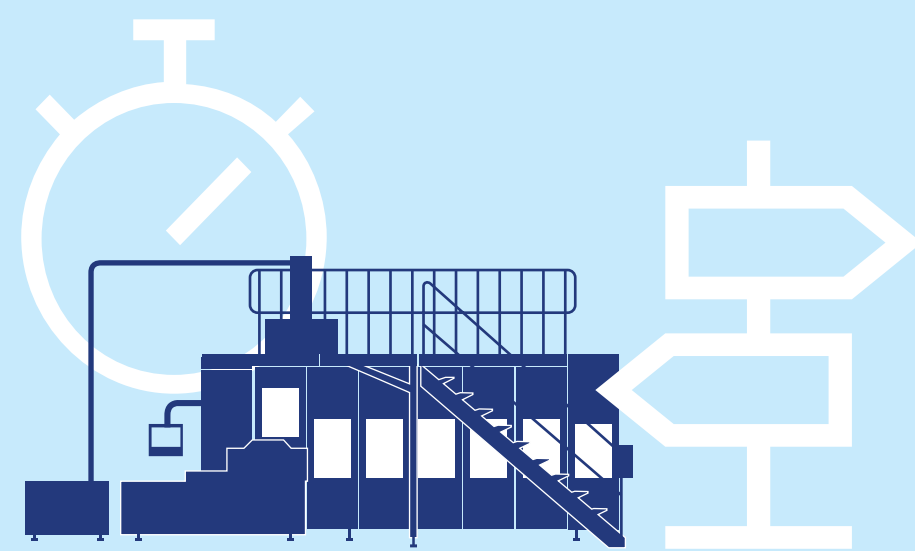
Non-oxygen-sensitive products

Oxygen-sensitive products



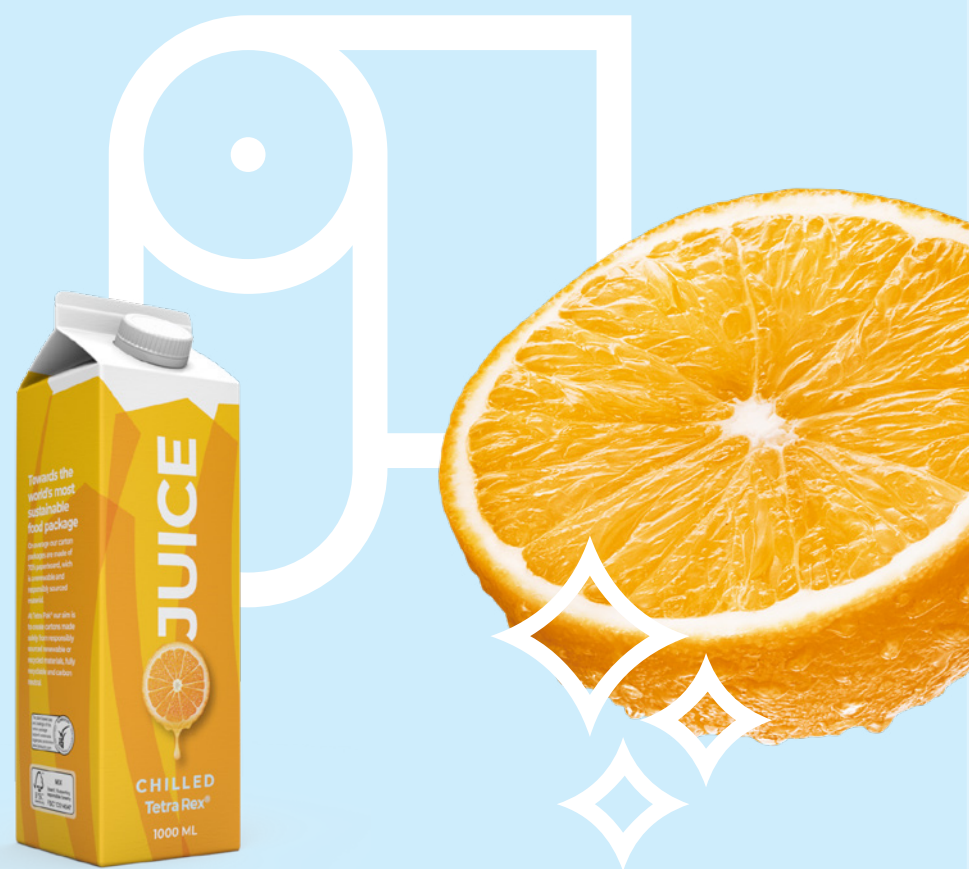
Flawless filling

Get flawless filling at top speed for a wide range of products thanks to our Filling Machines, which are also available with **QuickChange™** – a future-proof solution that helps you meet current and future consumer trends.



Fix up, look sharp

Get increased shelf impact and create sales and differentiation opportunities thanks to our **Tetra Pak® Craft** option and variety of print methods. These include the best-in-class photographic print quality of **Offset multi-colour print**, complete with unlimited colours and proof to print match.



Made to fit your product

Tetra Rex is ideal for a wide range of chilled products, from milk and dairy to fruit juices, plant-based beverages, tea, ice cream mix, egg-based products and soups.



Want to learn more about our chilled packaging solutions?

Contact us today >