

Tetra Pak's Collection and Recycling Initiatives in India

Like many other countries today, India is pursuing environmental sustainability with a sense of urgency, and compliance with Extended Producer Responsibility (EPR) is an essential component of this journey. EPR holds manufacturers accountable for managing post-consumer waste as well as the complete lifecycle of their products.

Tetra Pak has always worked on its sustainability strategy much ahead of the curve, before laws and legislation kicked in. Partnering with organisations working across the waste value chain has helped us in developing solutions, technologies and applications that have resulted in boosting the level of active sorting and recycling of used beverage cartons (UBCs).

An average Tetra Pak carton package is predominantly paper-based with 70% paper content, along with 25% polymer and 5% aluminium. This packaging structure not only keeps the food safe for a longer period, but also has lower climate impact, compared to other alternative packaging formats.

Tetra Pak carton packages are recyclable – they are collected and recycled worldwide, where waste management and recycling infrastructure is in place.



Our sustainability journey

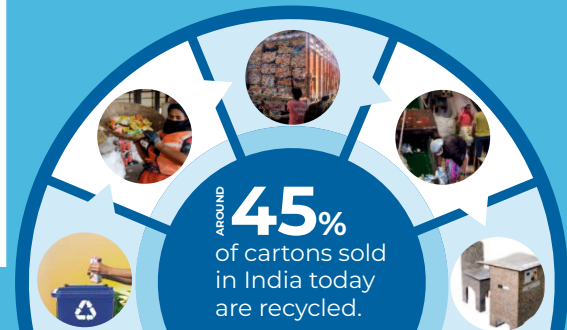
In India, Tetra Pak has been voluntarily executing EPR for close to 20 years, investing around INR 75 crores during this time. This has helped to build the ecosystem to collect and recycle UBCs.

Based on a 2022 study by The Energy and Resources Institute (TERI) on used beverage waste management, the recycling rate for UBCs stood at 62% for 22 surveyed cities in India.

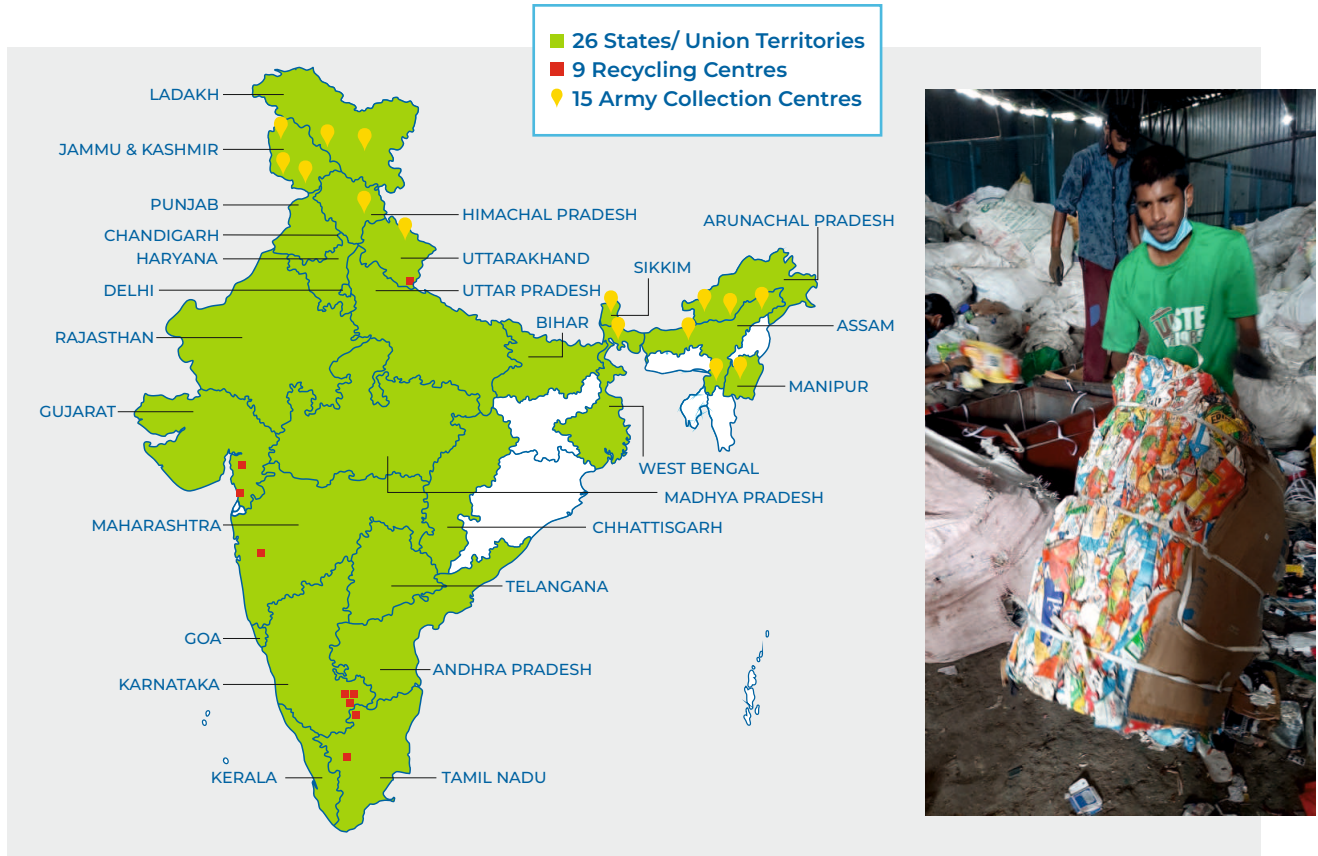
To provide access to education, healthcare and livelihood opportunities to waste workers, social sustainability programmes with NGOs like Bal Vikas Dhara are a key focus area. This is in addition to building capacity and providing support on collection infrastructure to multiple agencies like Waste Warriors, The Kabadiwala, Earth Recycler etc.

The recycling ecosystem is spread across India with more than 30 collection agencies covering 26 states and UTs. Additionally, we also partner with 15 Indian Army contingents in North and North-East India, wherein these contingents also act as collection centres for UBCs.

Tetra Pak supports the entire ecosystem of used carton recycling by its interventions across the waste value chain. This includes consumer awareness programmes like Alag Karo, Go Green with Tetra Pak, Cartons to Classroom to create awareness about value of UBCs, and importance of segregation at source..



The collection and recycling ecosystem built over 20 years



WASTE AGGREGATION:

30+ collection partners pan-India and five key aggregator partners - Shriman Enterprises, MM Enterprises, Green Recycling Links, Isha Fibre, and National Traders.

RECYCLING INFRASTRUCTURE:

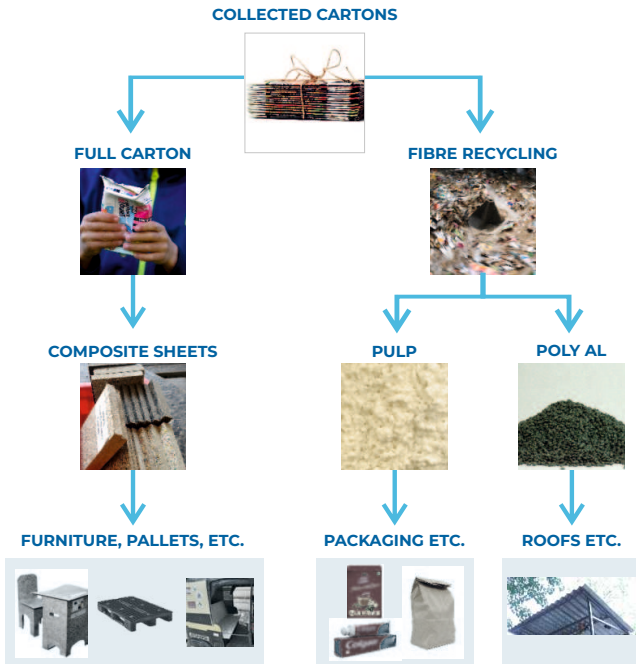
There are eight independent recyclers (nine recycling facilities) currently active in the network, and we are also constantly working to increase the footprint and add more recyclers. In addition, paper mills across the country actively recycle cartons due to the high quality fibre present in the paperboard.

QUICK FACTS

Used beverage cartons can be recycled via two processes:

Full carton recycling - The entire carton is shredded and compacted using high temperature and pressure to make composite sheets, through a zero-waste recycling process. Here, no separation of layers is required. These composite sheets are then used to make seats and backrests of commercial vehicles, pallets for transportation, and furniture.

Fibre recycling - In this process, the fibre content (~70%) is extracted in a paper recycling mill and then converted into paper-based products like secondary packaging for tea, toothpaste, cosmetics, corrugated cartons and stationery items. The remaining polyAl is separated and used to create waterproof products like roofs, furniture, planters, and more.



Voluntary EPR
Past 20 years

Invested amount as on December 2023
INR 75 crores

Collection infrastructure
26 states & UTs
15 army contingents
30 collection partners
including
• 5 collection aggregators
• 4 startups
• 3 NGOs

Recycling rate as per TERI 2022
report for surveyed cities
2011 - 29%
2015 - 43%
2018 - 54%
2021 - 62%

Extrapolated recycling rate as
per TERI 2022 report for India
2021 - 45%

Recycling partners across India
9 facilities
8 partners

To know more, visit: tetrapak.com/en-in/sustainability